



APS

STEEL TUBES & PIPES

— Promise of a Lifetime —

**TOMORROW
STARTS
TODAY ...**
2023 Product Catalog



WHO WE ARE

APS pipes & tubes is part of SS steel & Power that has a pan India presence in different fields like steel and pipes manufacturing trading, and export, Founded in 2018, SS steel & Power s has established itself firmly on the national map as a leading manufacturer of seamless steel pipes, ERW pipes, & Ms strip.

From our modest beginning, we have come a long way. Having spent almost 30 years in the steel and pipe industry, we have now grown into a big organization that has become synonymous with delivering high-quality products on time at affordable and competitive prices to meet all expectations of our customers. Over the years, we have learned about the latest market trends and gathered useful insights to better understand our customer's requirements. And this is what helps us work closely with all our clients – both small and big, to ensure that their unique business needs are fulfilled.

WHO WE ARE

OUR VISION

To make a difference in this highly competitive world, you need to have a clear and focused vision. Considering this fact, SS Steel & power has established its crystal clear vision, blending its aspirations and efforts together to bring in the change for better. We strive to become the world's leading ERW MS Pipes and steel tubes manufacturers. We work constantly to turn our vision into reality through core values, dedicated team working, cultivation of talent and putting passionate ideas in frame.

OUR MISSION

To make people more competitive and successful in their ventures by providing uninterrupted supply of quality solutions.

CORE VALUES

- ▶ Integrity
- ▶ Ethics
- ▶ Continuous improvement
- ▶ Quality & professionalism
- ▶ Growth

CORE
VALUES

WHY CHOOSE US

- ▶ Experience
- ▶ Professional
- ▶ Sustainability
- ▶ Innovation
- ▶ Integrity
- ▶ Reliabet

WHY
CHOOSE US

QUALITY TESTING & MAINTENANCE

Modern age laboratory equipped with advanced technical machines and trained professionals for stern quality checks. We never release any supply to the marketplace without initiating and accomplishing multiple level quality tests. We maintain the steel pipes and tubes effectively until we deliver them to our clients

Testing Equipments & Facility

- ▶ Universal Testing Machine
- ▶ High temperature Muffle Furnace
- ▶ Apparatus for Carbon and Sulphur Determination
- ▶ Thickness Guage
- ▶ Pipe Bending Machine



INFRASTRUCTURE

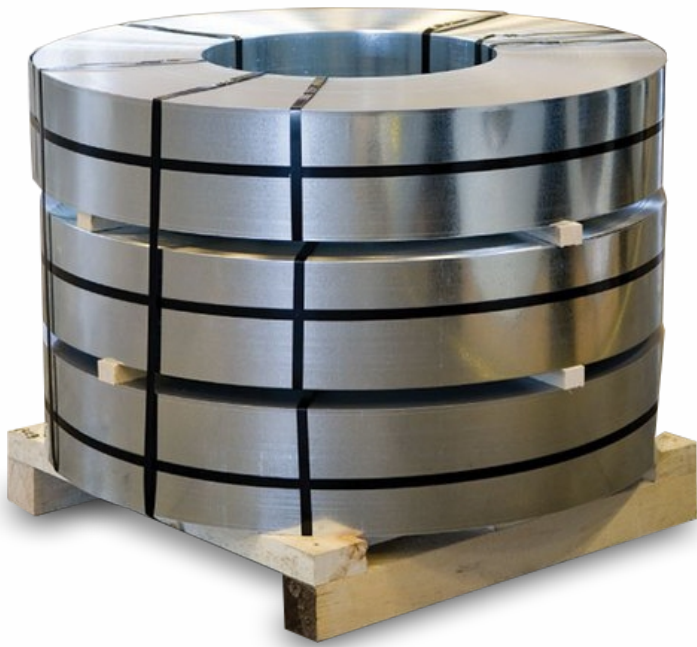
Trained & Skilled Workforce

We have established the best workforce to ensure perfect planning, manufacturing, finishing and quality testing of the products. We put the right skills at right usage through our experienced supervisors. Our trained workforce knows to put the following resources on effective usage.

INFRASTRUCTURE

State of art Manufacturing Facility

The machines and technologies deployed by us in fabricating the wide and advanced range of ERW MS Pipes and steel tubes are supreme. Through our central motivation of improving quality scale in the steel pipes/ tubes manufacturing, we have established new means of quality.



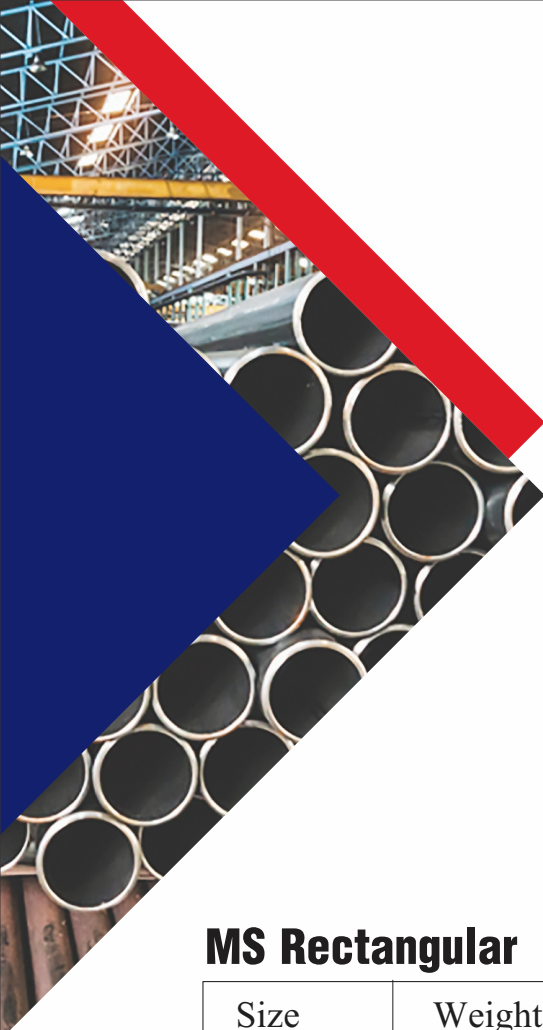
MS Strip

Size	Thickness
100MM To 276MM	1.2MM & Above



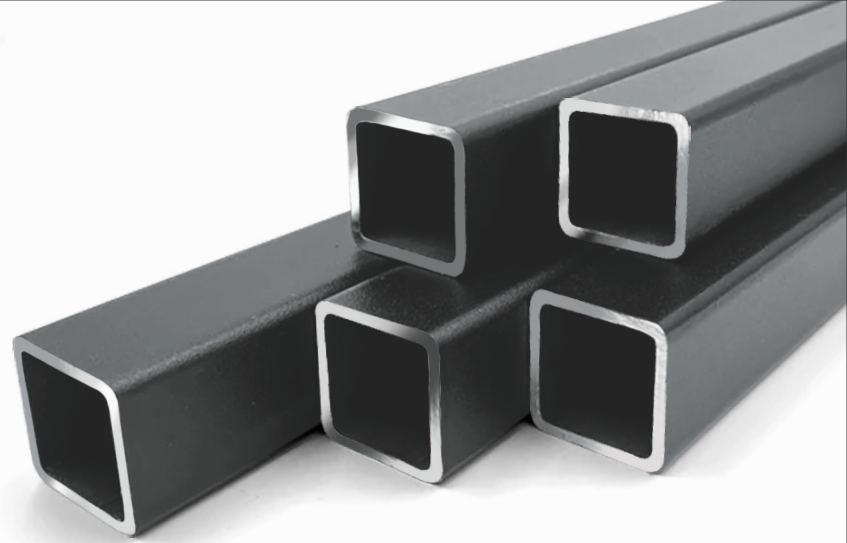
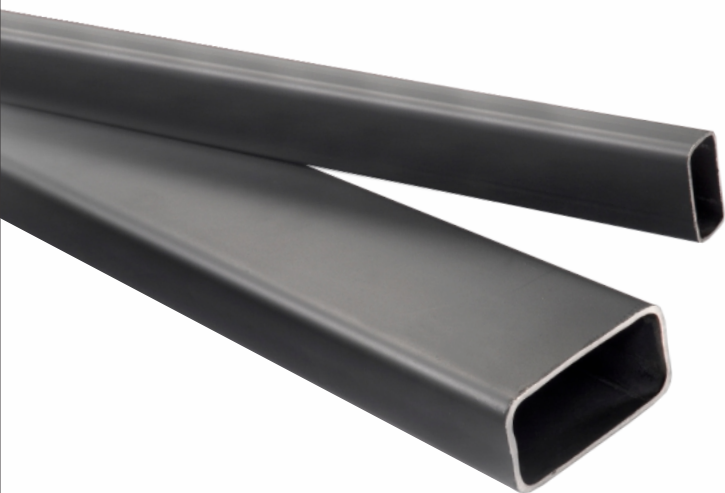
MS Round Pipe

Size	Weight
25 OD	4 KG To 8 KG
32 OD	5 KG To 11.5 KG
42 OD	6.5 KG To 17.5 KG
48 OD	7 KG To 22 KG
60 OD	9 KG To 28 KG
76 OD	18 KG To 23 KG
88 OD	27 KG To 45 KG



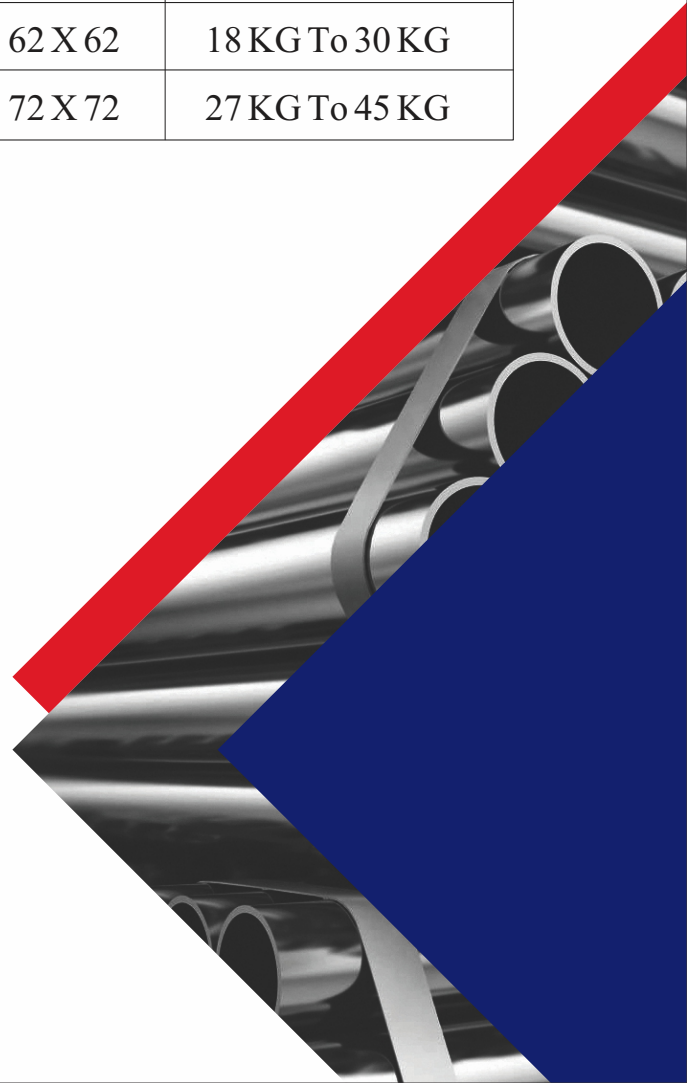
MS Rectangular

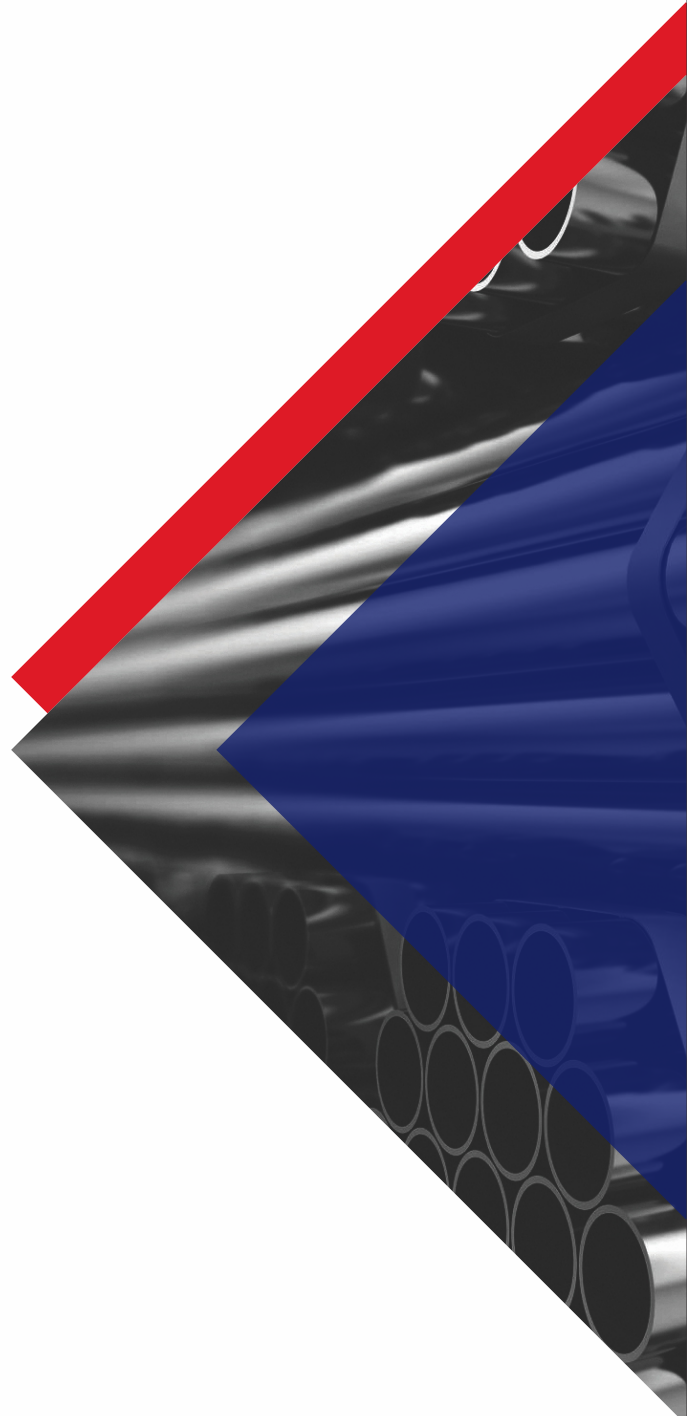
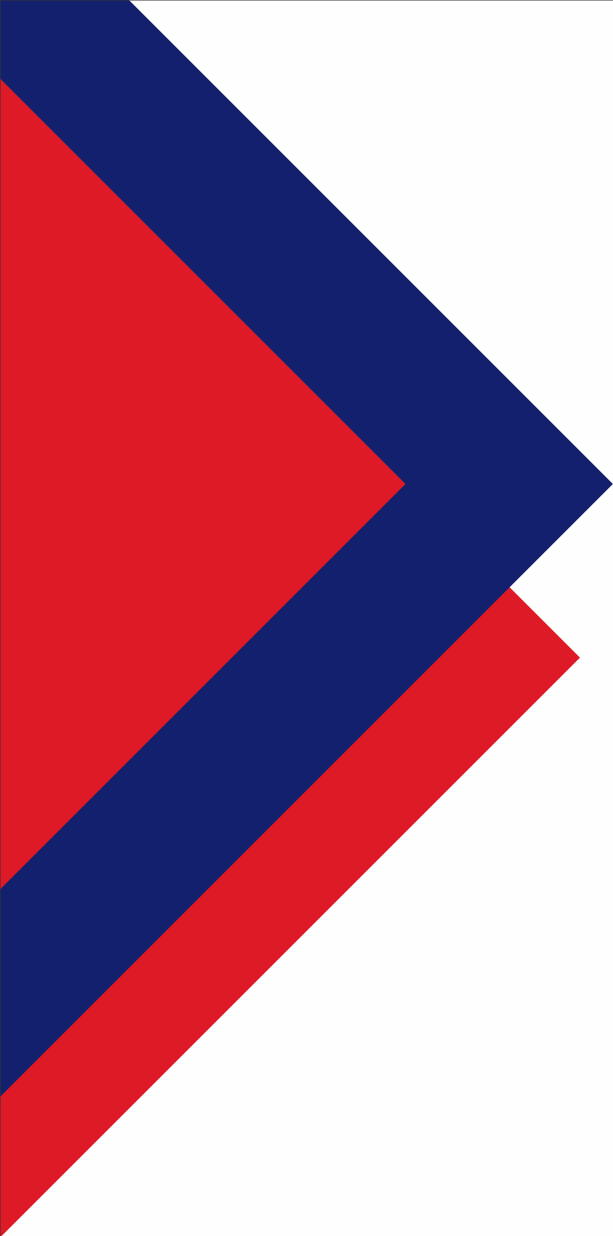
Size	Weight
42 X 22	6.5 KG To 15.5 KG
50 X 25	7 KG To 22 KG
56 X 37	9 KG To 28 KG
68 X 25	12.5 KG To 20 KG
80 X 40	18 KG To 30 KG
95 X 25	23 KG
96 X 48	27 KG To 45 KG



MS Square Pipe

Size	Weight
19 X 19	4 KG To 8 KG
25 X 25	5 KG To 11.5 KG
32 X 32	6.5 KG To 17.5 KG
38 X 38	7 KG To 22 KG
47 X 47	9 KG To 28 KG
62 X 62	18 KG To 30 KG
72 X 72	27 KG To 45 KG





- 📍 Vill. Pali Po. Gerwani Dist. Raigarh (CG)
- ✉ sssteelandpower@gmail.com 🌐 www.sssteels.com
- 📞 73893 53442